



# AUMS MDM Meter Data Management.

[aums.asseco.com](http://aums.asseco.com)

ASSECO

# AUMS MDM

## Meter Data Management.

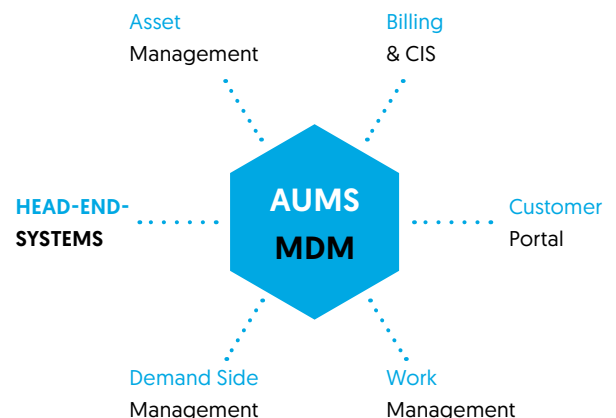
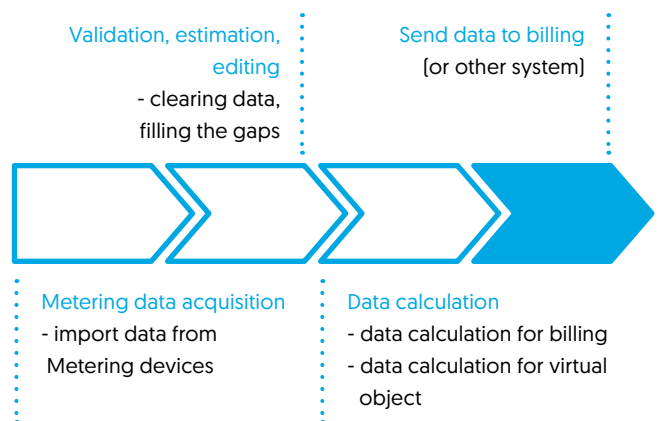
AUMS Meter Data Management is a Utility business solution which securely integrates all reading data sources into one powerful platform. AUMS MDM provides your Enterprise best quality, accurate meter data supporting the meter-to-bill process as well as other meter data dependent areas of the utility business.

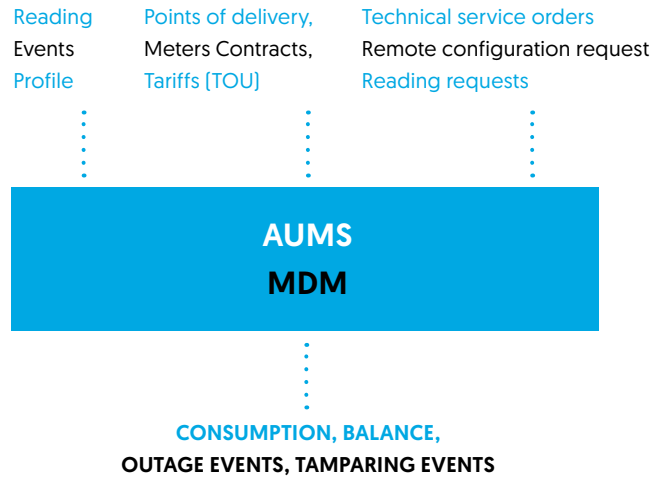
### Center of utility business.

Meter data management is one of most crucial systems for a Utility company which allows you to focus on your core business of providing to Customers high quality services today, as well as preparing your business for future challenges.

AUMS Meter Data Management allows you to cover the entire meter data management process starting from meter data acquisition, through validation, storing, transforming and recalculating data according to business rules required by different internal and external systems.

AUMS Meter Data Management integrates different sources of meter data including: manual reading, remote meters, meter vendor specific head-end-systems or even files into one central platform which enables transparent processing of all data basing on the same rules and conditions. The system can comprehensive-ly support electricity, gas, water and heat and operate with many billing systems so that it can be adopted to all your current and future business needs.





Integration of all meter data and master data give a utility company a 360° view of metering point through user-friendly web-based interface. This view permits seeing usage history, all meter events, remarks and notes from meter collectors and technical workers, data statuses from VEE procedures as well as metering devices installation and removal.

## Fast and efficient system integration.

In Smart Grid and AMI environments meters provide more information than mere consumption for billing so integration of MDM systems has become a critical and important subject for utility company. To work effectively, events, profiles and instantaneous readings must be quickly propagated across many systems and business processes.

AUMS Meter Data Management can be easily integrated with existing systems using web services API which consists of SOAP web services interfaces based on IEC 61968 family regulations. Standard API includes services for exchange of master data, readings, interval data, events, reading orders, disconnection and reconnection orders, tariff change order.

For integration with systems which do not support IEC interfaces, AUMS MDM provides build-in ETL tool to extract data to files. The formats of outgoing files can be quickly adopted during the project design and implementation stage.

## Our system can grow together with your business.

AUMS MDM can be provided either on-premise or cloud-based installation. The cloud-based solution is mostly offered as a SaaS model so customers do not need to focus on hardware requirements, software updates and maintenance.

No matter what implementation pattern you choose, because of its modularity and scalability the system can be adopted to your current and future processing needs especially when you are planning a progressive mass-scale rollout of smart devices installation.

## Key features.

AUMS Meter Data Management is an application designed and developed based on many years of experience in metering data acquisition and processing. Our specialist's energy sector knowledge and experience guarantee that our product provides you with a set of functionalities which fully supports your utility irrespective of its size.

### Manual reading collection

The System can be provided with a build-in module for manual reading collection which helps you to manage your own or third party collector workforce by preparing reading routes, assigning routes to collectors, monitoring and reporting the performance of metering data collection. The backend application can operate with mobile application based Windows Mobile or Android platform. The mobile application can work online, or in offline mode which can be used in a case of weak GSM signal conditions.

### Virtual object

The system provides powerful tools that enable users to define custom object types and measurements which can be calculated based on metering data prepared and cleaned by VEE rules. The User can set up algorithms of data calculation based on a defined hierarchy of metering objects including real metering points as well as other virtual objects as input data. The calculation engine detects changes of calculation hierarchies such as new objects assignments, objects deletion and new readings to automatically trigger the recalculation process. Results of calculation can be stored in MDM or exported to external systems.

### Remote reading collection

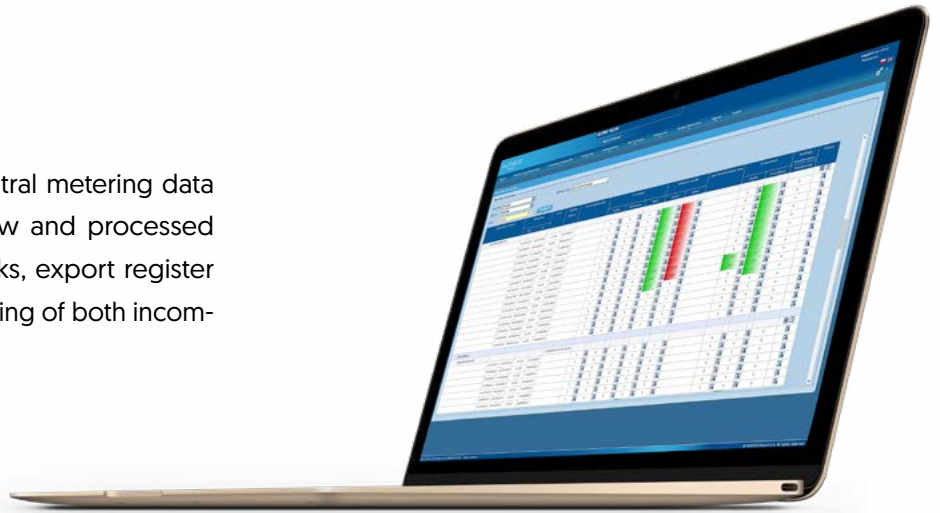
The system supports remote data collection with market proven smart meter adapters. Remote two-way communication can be done directly with a meter using DLMS/COSEM protocol or via vendor specified head-end meter systems. New protocols and drivers for meters and HES can be easily added using our unique development kit and plugin technology.

### Validation, Estimation and Editing (VEE)

To ensure high data quality which can be used by other business processes, the system provides a set of validation rules which supports both interval data as well as billing readings. Rules can be customized by the application operator and assigned to each metering point or user defined groups of metering points. Results of VEE operations are stored as a system log and can be easily browse, reported and exported. Estimated or edited metering data is stored with proper version number and system remarks which guarantees transparency and traceability of the process.

## Metering data hub

The system can be treated as a central metering data hub which securely stores both raw and processed data. Version control, source remarks, export register mechanisms ensure tracking and tracing of both incoming and outgoing metering data.

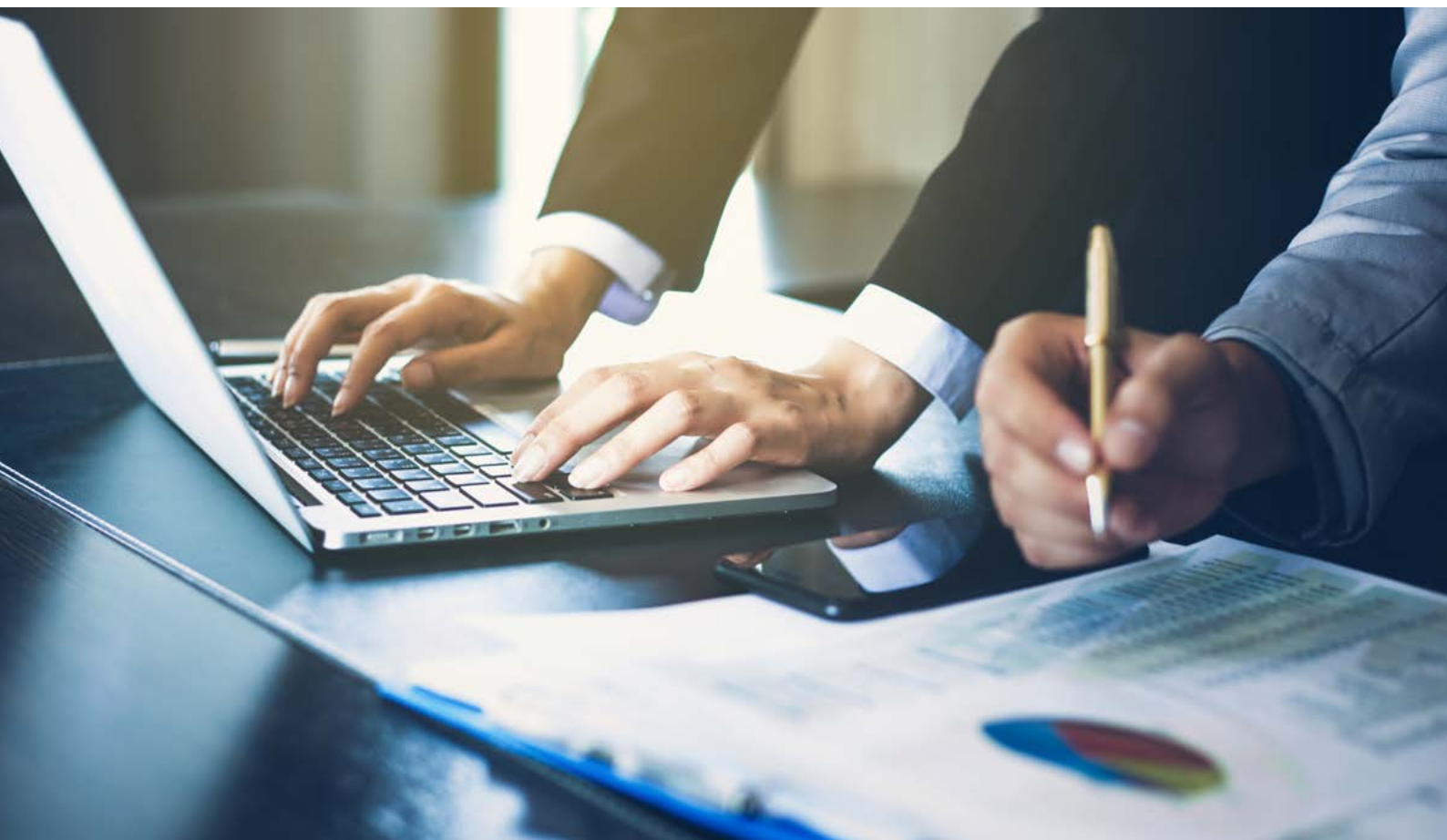


## On-demand end devices operations

AUMS MDM is provided with API and GUI to execute on-demand and scheduled end device operations such as on-demand reads, disconnect/reconnect, meter reprograms. Operations can be requested for each metering point or for a group of points. All requests are monitored and users can be notified of results as soon as response data is received from meters.

## Automated processing

All core operations such as validation, estimation, transformation, calculation, export and import can be run as batch background processes. All execution conditions such as date, time and business object's ranges can be set up to optimize and adjust the meter data management process to utility specific time regimes and data requirements.





## Key Benefits.



Multi-utility support in one comprehensive system allows you to save costs of infrastructure, integration and maintenance



One central source of meter data for all processes allows you to maintain integrity of data processed across multiple utility systems



VEE rules applied to all incoming meter data regardless of the source, provides you best quality, accurate data for billing and non-billing services



Support of manual and remote metering provides flexibility for your business planning and takes you smoothly through the transition process from traditional to advanced metering infrastructures



Using IEC standards for web services and commonly used meter communication protocols guarantees cost effective integration



Out of the box integration with Asseco Utility Management System family of products

## Specifications.

- Database Platform: Oracle 11g and 12c
- Operating System for client application:
  - Windows 7 and 10 for Meter Data Acquisition
  - Windows, Linux, MacOS for Meter Data Management (web based client can use any modern web browser)
  - Android 6.0 or above of Windows Mobile for Mobile Meter Data Acquisition
- Operating System for server application:
  - Windows Server 2008 and 2012 R2 for Meter Data Acquisition Server
  - Windows, Linux with J2EE application server (Tomcat, WildFly, JBoss) for Meter Data Management
- System can be installed on virtualized environments

# AUMS MDM

## Meter Data Management.

Asseco Poland S.A.  
Olchowa 14  
35-322 Rzeszów  
Poland  
Phone: +48 17 858 30 20  
Fax: +48 17 888 55 50  
Email: [aums@asseco.pl](mailto:aums@asseco.pl)

[aums.asseco.com](http://aums.asseco.com)

The logo for Asseco, featuring the word "ASSECO" in a stylized, bold, black font. The letters are blocky and have a unique, slightly irregular design, particularly in the 'S' and 'E' characters.